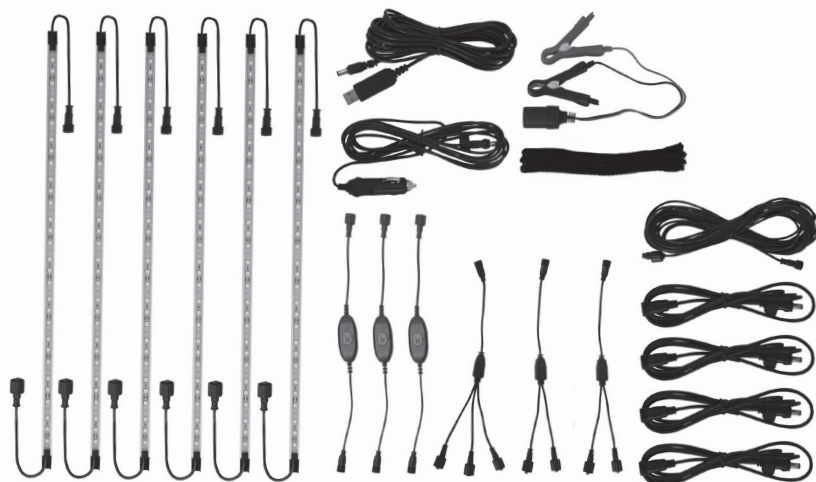




## Light Bar Kit - White

Model No. KC005-037



### INCLUDES:

- Battery terminal connector
- 3m 12V DC cord
- 5m 12V USB cord
- 10m extension cord
- 2 x 1.5m extension cords
- 2 x 3m extension cords
- 2 x 2 way splitter
- 3 way splitter

### SPECIFICATIONS:

**Light Strip Size:** 545 L x 10 H x 13 W (mm)

**Bulb Type:** 30 LED's

**Weight:** 120g

**Lumens:** 400

**Amps:** 0.5A

**IP Rating:** IP65

### CAUTION:

Read and understand the product manual in full prior to using this product.

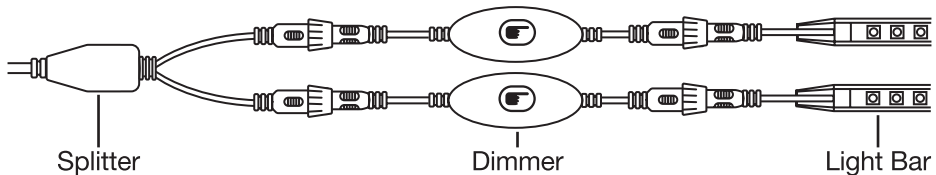
Use caution when connecting power source as this may cause injury when not carried out correctly.

USB cord should not be used with mains power. Use with 12V output only.

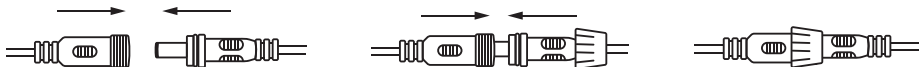
# INSTALLATION INSTRUCTIONS

There are several ways that LED lights can be installed:

- Secure the hook and loop tabs by feeding through the end slots and securing to fabric hanging points or a suitable location.
  - Secure using built-in magnets, fixing to any magnetic surface.
1. Plug the light into the dimmer, then plug the dimmer into the power cord of your choice. For example, use the 12V DC power cord if using a DC power output. **Note:** If using USB cord to power the lights, you may experience a dimmer light when compared to using a 12V DC cord due to the reduced wattage from the USB.
  2. Add additional light bars by plugging them into one another. To add length, use the extension cable provided. For optimum performance, it is recommended to use a splitter and have one dimmer switch per branch of lights.
  3. Secure all connections by twisting the joiner at each connection point.



4. Plug the power cord into your chosen power source. Ensure all parts are connected and that there are no missing links. Turn on the power source.



5. To turn the light bar on or off, tap the red button (⏻) on the dimmer switch. **Note:** If there are multiple dimmer switches. The first dimmer in the chain will control the brightness and power.
6. Once the lights are on, adjust the brightness by holding down the red button (⏻) on the dimmer switch.
  - a. To achieve maximum brightness, continue to press the red button (⏻).
  - b. To dim the lights, stop pressing the dimmer switch. Then press the red button (⏻) again, holding it down to dim.
  - c. Stop pressing the red button at any point to select the correct level of brightness.

## **WARNING**

Use caution when connecting power sources as this may cause injury when not carried out correctly.

This product is IP65 rated and water-resistant, but not waterproof.

Handle with care; connection pins are easily damaged.

## **SAFETY INFORMATION**

1. DO NOT look directly at LED lights.
2. LED light bars are designed for use in sheltered areas; we recommend keeping the connections out of the rain.
3. DO NOT place heavy objects on top of LED lights. Doing so may cause damage to the LED light.
4. DO NOT place LED lights close to heat/stoves or moving parts. Doing so may cause damage to the LED light.
5. DO NOT overstress or overextend the cords. Doing so may damage connections and lead to product failure. Damaged or frayed cords should be replaced for safety reasons.
6. Ensure the power source is turned OFF before installation to avoid injury.

## **TROUBLESHOOTING**

Ensure that all power connections are plugged in and switched on and that the DC connector plugs are not loose. The DC connection will light up red, showing that it is connected properly. If it does not illuminate, a fuse may be damaged; this can be replaced.

# WARRANTY INFORMATION

**The warranty period for this product is one year and full details are on the Kiwi Camping website - [www.kiwicamping.co.nz](http://www.kiwicamping.co.nz).**

The original purchaser of this product is offered a warranty if, during this time period, the product fails due to a fault in either materials or workmanship. Service under this warranty is available by returning the product, with your proof of purchase, to where it was purchased. If, after inspection, it is determined that the product is defective, we will repair or replace it (at our discretion) free of charge. This warranty does not cover misuse, damage caused by accident, storm or wind damage, mildew, neglect, UV degradation and fair wear and tear. Please note, the warranty on this Light Bar will be deemed void if the product is used for any purpose other than its intended use.



AS/NZS 60598.2.20  
AS/NZS 60598.1



Distributed by: Aber Living, Hamilton, NZ  
[www.kiwicamping.co.nz](http://www.kiwicamping.co.nz)

5383-11/22